

Genesis Series

Lesson #016

June 18, 2003

Dean Bible Ministries

www.deanbibleministries.org

Dr. Robert L. Dean, Jr.

A cosmic background featuring a bright sun or starburst in the center, surrounded by numerous stars and several planets. One planet is visible in the upper right, and another is partially visible in the lower left. The overall color palette is dominated by deep blues and purples.

GENESIS

Book of Beginnings

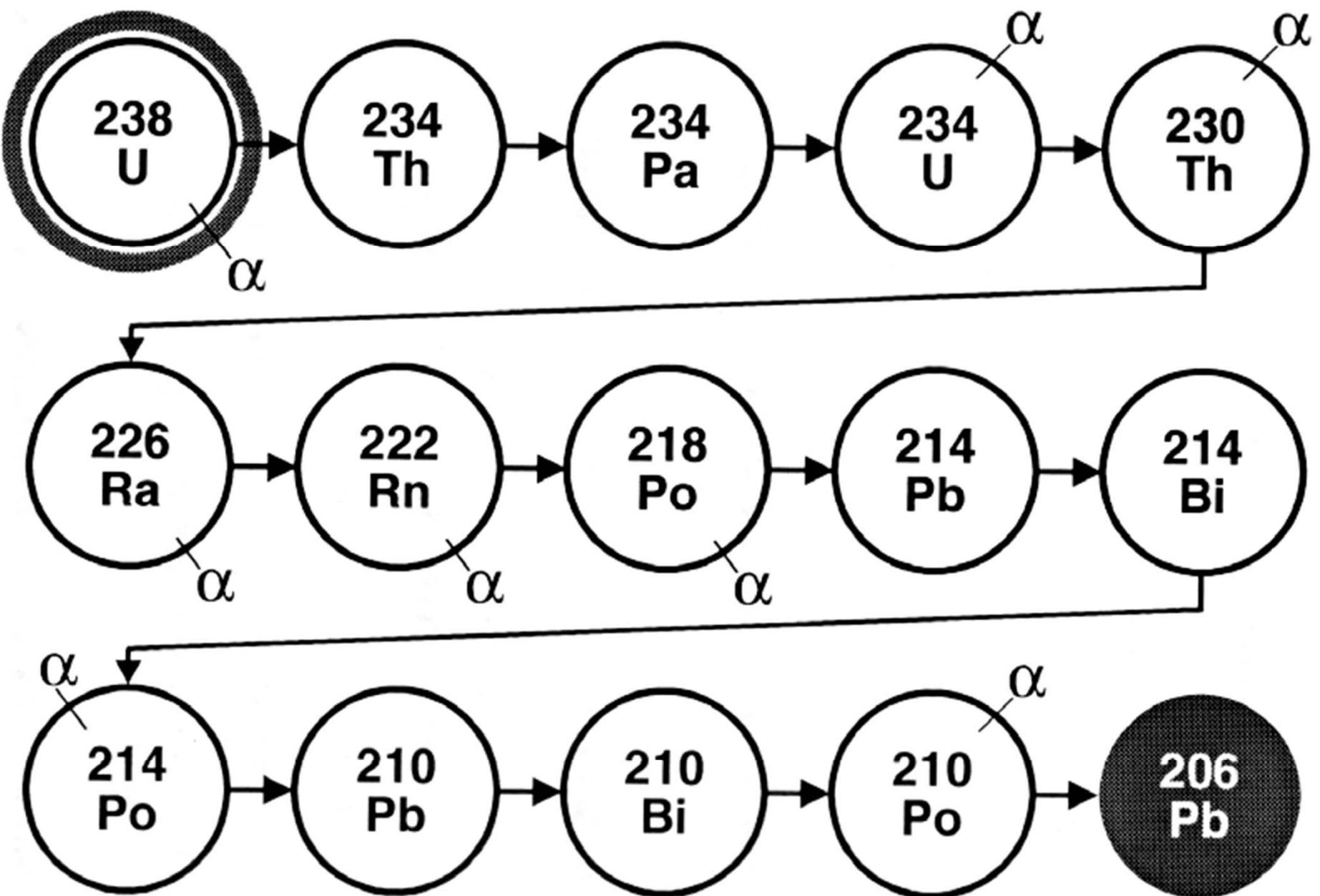
Introduction: Timing is the Issue

Time + Chance = Everything

- 1. We can observe the present condition of a rock or processes in a system.**
- 2. We can measure the current rate of that process operating within the system.**
- 3. We can make certain assumptions about the past history of the rock or system. This is called building a model.**
- 4. We can calculate, based on present processes, the length of time a system was in operation.**

****All we know with certainty is
what we observe in the present.**





U^{238} Decay Series

ASSUMPTION ONE:

The rate of decay must have always been the same.

ASSUMPTION TWO:

The rock initially contained none of the daughter element.

ASSUMPTION THREE:

The rock specimen has never, ever been contaminated.



Rocks of
Known Age



Radioisotope
Dating
Doesn't Work

Rocks of
Unknown Age

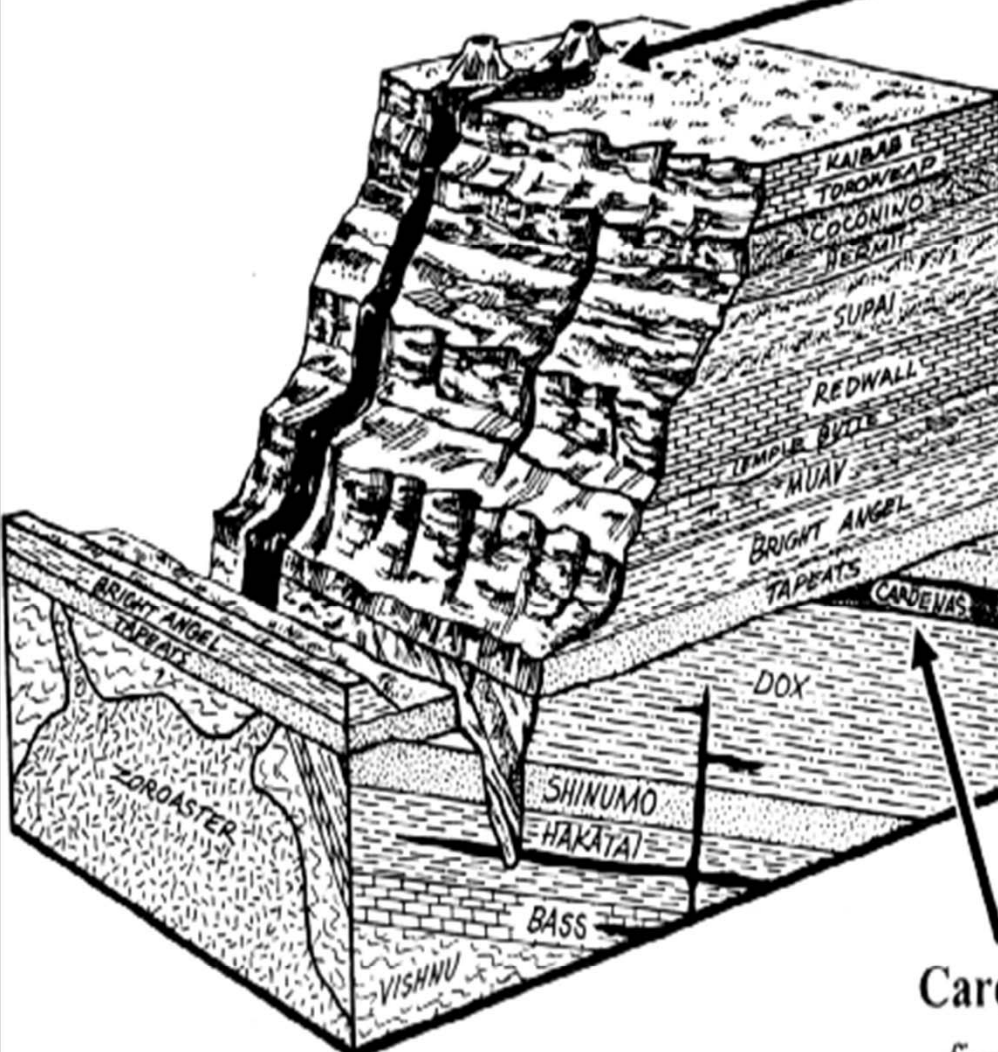


Radioisotope
Dating
Assumed to Work

Assumption FOUR: The earth is at least old enough for the present amount of radiogenic lead in a specimen to have been produced by present rates of uranium decay.

Basaltic rocks of Uinkaret Plateau

six K-Ar model ages 0.01 to 17 million years
five Rb-Sr model ages 1270 to 1390 million years
one Rb-Sr isochron age 1340 million years
one Pb-Pb isochron age 2600 million years

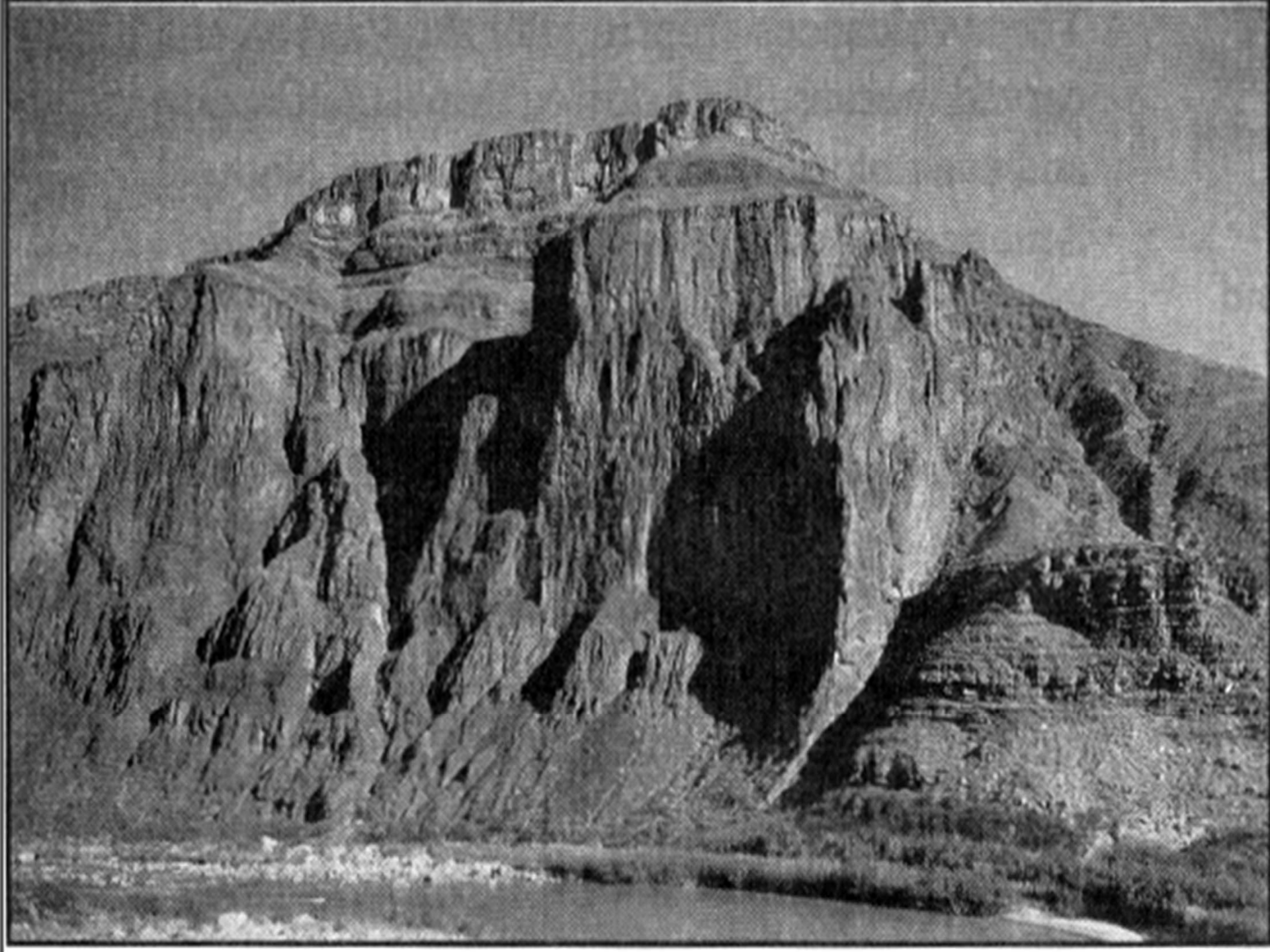


Paleozoic

Precambrian

Cardenas Basalt (Precambrian)

five K-Ar model ages 791 to 853 million years
six Rb-Sr model ages 980 to 1100 million years
one K-Ar isochron age 715 million years
one Rb-Sr isochron age 1070 million years



The troubles of the radiocarbon dating method are undeniably deep and serious. Despite 35 years of technological refinement and better understanding, the underlying *assumptions* have been strongly challenged, and warnings are out that radiocarbon may soon find itself in a crisis situation. Continuing use of the method depends on a “fix-it-as-we-go” approach, allowing for contamination here, fractionation there, and calibration whenever possible. It should be no surprise, then, that fully half of the dates are rejected. The wonder is, surely, that the remaining half come to be *accepted*.

No matter how “useful” it is, though, the radiocarbon method is still not capable of yielding accurate and reliable results. There are gross discrepancies, the chronology is uneven and relative, and the accepted dates are actually selected dates.

**Lee, Robert E. “Radiocarbon, Ages in Error,”
Anthropological Journal of Canada, Vol. 19, No. 3, 1981, pp.
9, 29 (Assistant Editor).**

Rom. 1:18 For the wrath of God is revealed from heaven against all ungodliness and unrighteousness of men, who suppress the truth in unrighteousness,

Rom. 1:19 because that which is known about God is evident within them; for God made it evident to them.

Rom. 1:20 For since the creation of the world His invisible attributes, His eternal power and divine nature, have been clearly seen, being understood through what has been made, so that they are without excuse.

Rom. 1:21 For even though they knew God, they did not honor Him as God, or give thanks; but they became futile in their speculations, and their foolish heart was darkened.

Rom. 1:22 Professing to be wise, they became fools,

Rom. 1:23 and exchanged the glory of the incorruptible God for an image in the form of corruptible man and of birds and four-footed animals and crawling creatures.