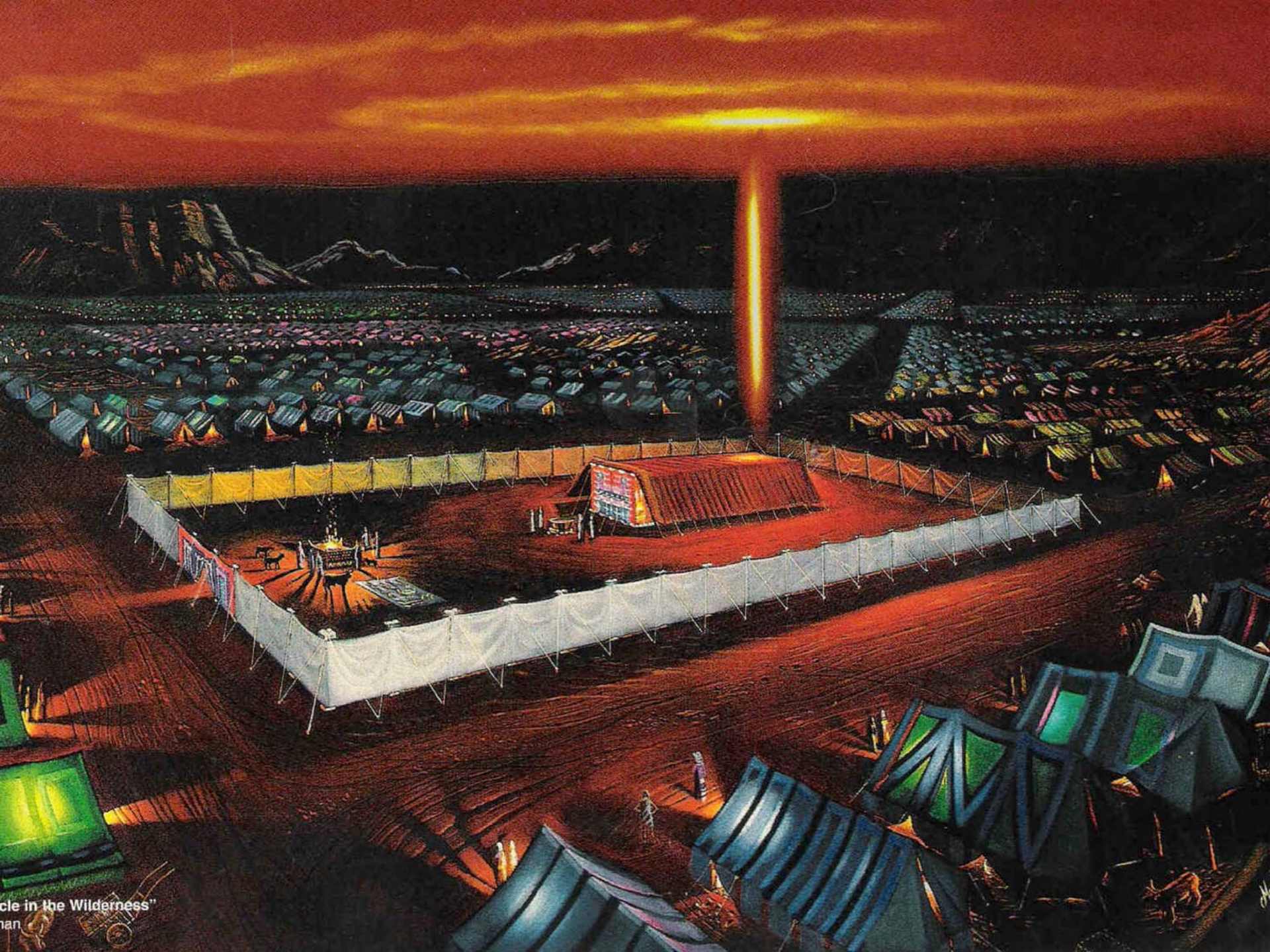


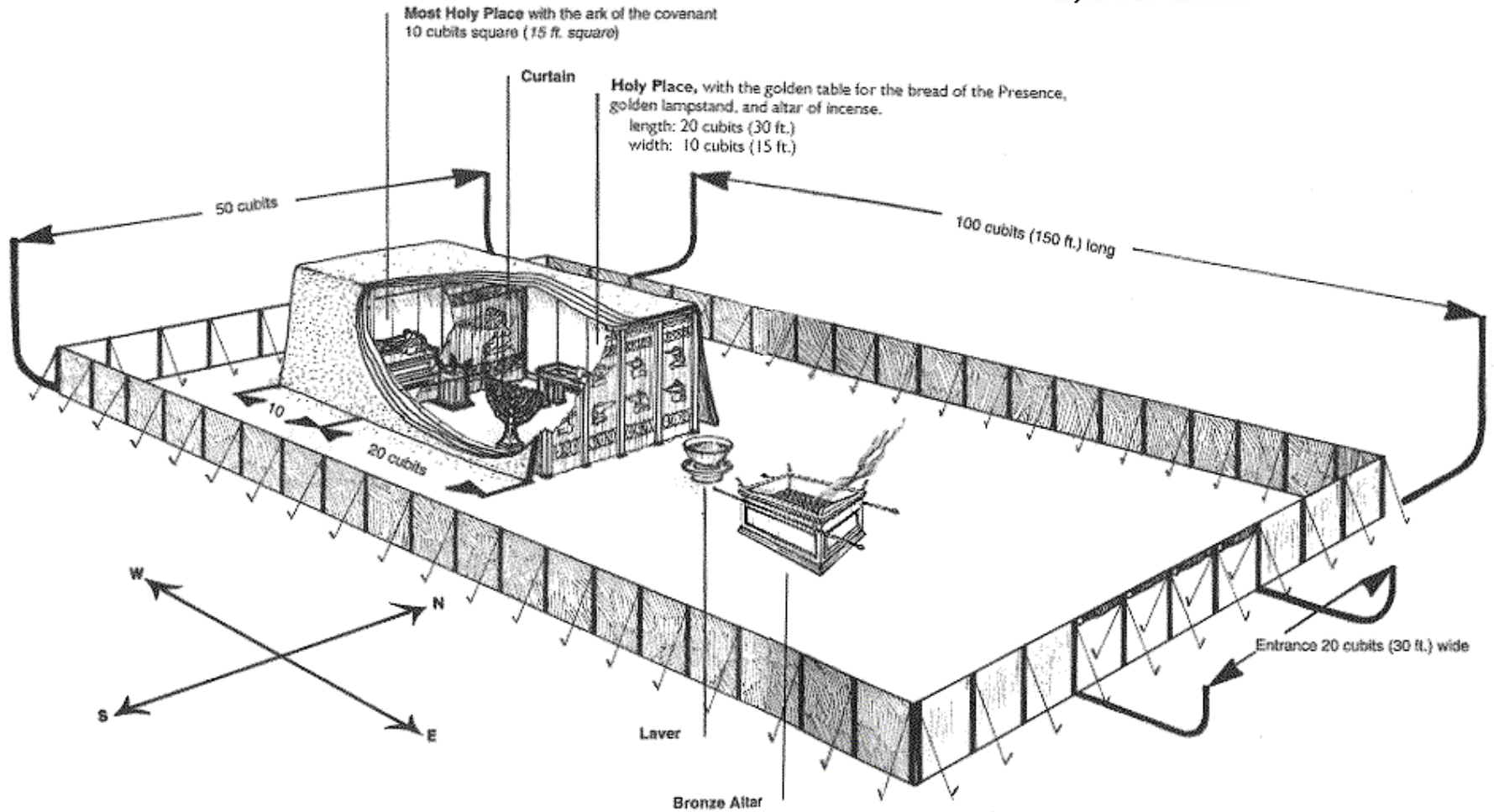
משכן

The Tabernacle



icle in the Wilderness"
han

Layout of the Tabernacle





Tabernacle holy place with objects



**Golden
Candlestick**

**Christ the
Light of
the World**

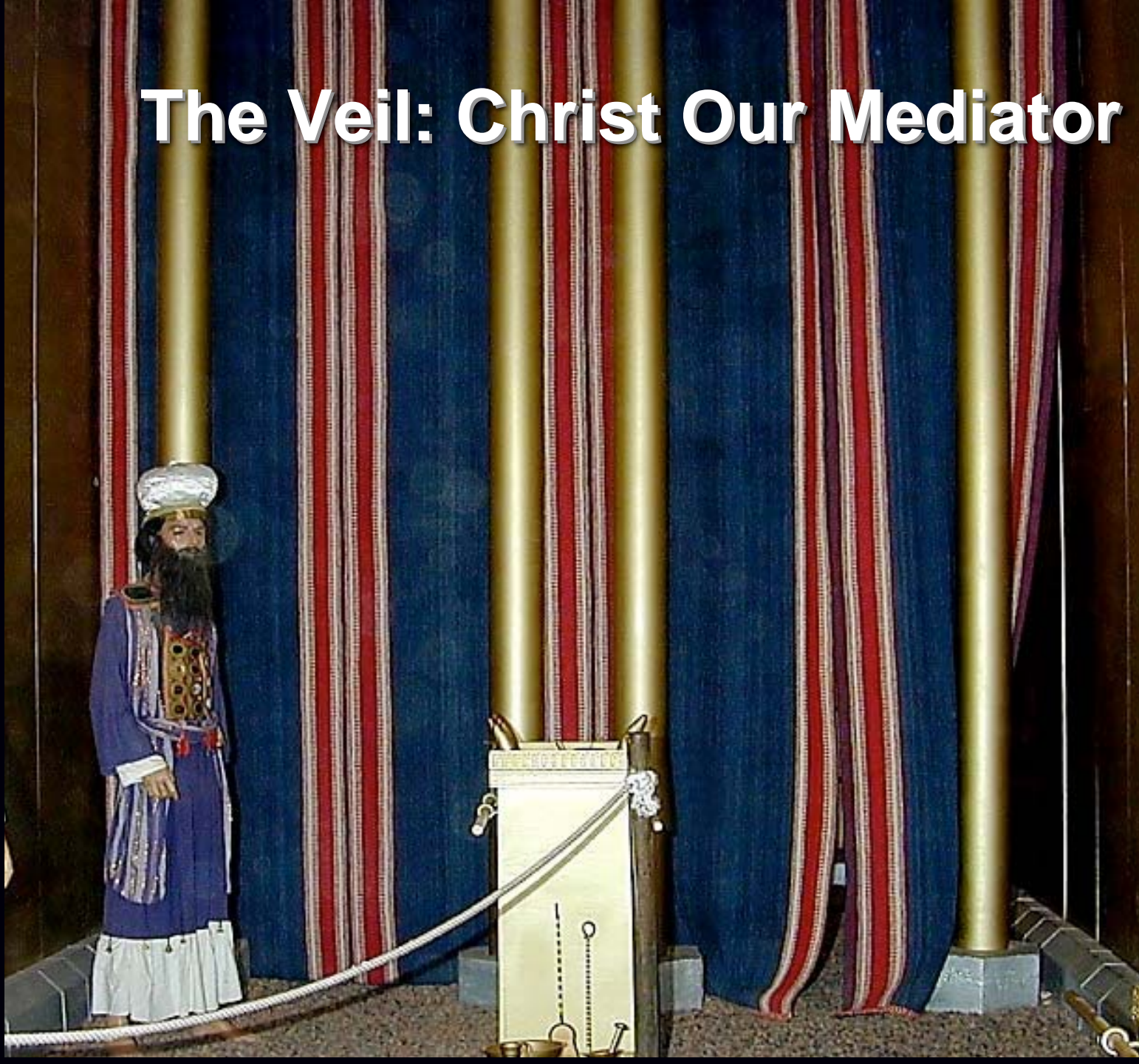
Table of Showbread: Christ the Bread of Life





**Altar of
Incense:
Christ Our
Intercessor**

The Veil: Christ Our Mediator



פָּרֹכֶת (pārōket), curtain in front of the Most Holy Place. 15x “that which shuts off”

תְּכֵלֶת (*t^ekēlet*) blue, violet; bluish purple.

Symbolic of heaven as the true dwelling of God and the heavenly origin of the Tabernacle.

HEAVEN

אַרְגָּמָן ' *argāmān* purple, reddish purple.

Signifies royalty.

ROYALTY

שָׁנִי (šānî I), scarlet, red, a bright red with a touch of orange.

SIN

תולָע (*tôlā*^c I), worm, material dyed crimson.

SIN

Isa 1:18, “Come now, and let us reason together,” says the LORD, “Though your sins are like scarlet, they shall be as white as snow; though they are red like crimson, they shall be as wool.”

Matt. 27:51, “And behold, the veil of the temple was torn in two from top to bottom; and the earth shook and the rocks were split.”

Heb. 10:20, “by a new and living way which He inaugurated for us through the veil, that is, His flesh,

Heb. 10:21, “and since *we have* a great priest over the house of God,

Heb. 10:22, “let us draw near with a sincere heart in full assurance of faith, having our hearts sprinkled *clean* from an evil conscience and our bodies washed with pure water.”